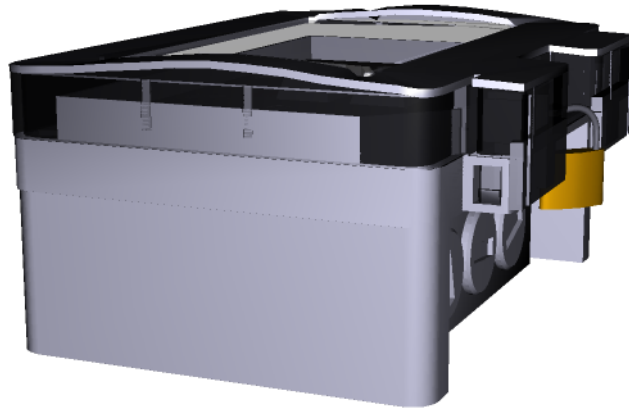


Weatherproof WN - IP55 Twin Products



Open

Close

- * Twin 13A PowerBreaker RCD socket
- * Incorporates PowerBreaker technology
- * Rugged metalclad socket
- * Mechanically latched - does not need resetting after a power failure
- * Double pole operation
- * Conforms to BS7288 & Bs1363
- * Rated trip current 30mA
- * Trip speed 40mS (typical)
- * Twin earth terminals
- * Trip indication - mechanical flag + neon